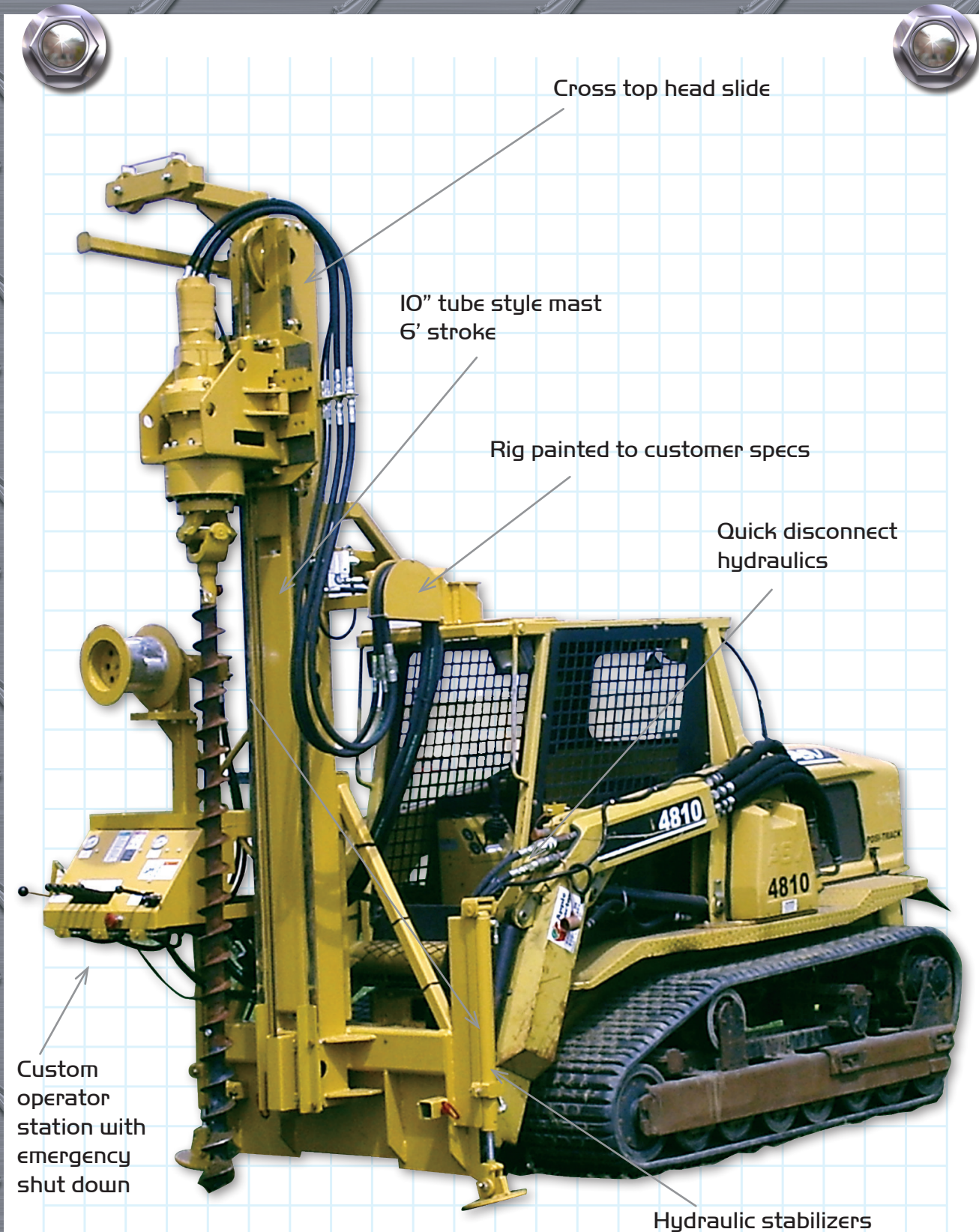


BANDIT DRILL ATTACHMENT



(Customizing & other options available.)



1480 Lincoln Street SW
 PO Box 96 • Le Mars, Iowa 51031
 712.546.4145 • 800.383.7324
 Fax: 712.546.8945
 guspech@guspech.com

MODEL	STROKE	SPEED	TORQUE	PULLDOWN	PULLBACK	MAST
GP-120	5 ft - 14 ft	0-150 rpms	1,200 ft lbs	6,625 lbs	8,836 lbs	40,000 lbs
GP-359	5 ft - 14 ft	0-70 rpms	3,590 ft lbs	6,625 lbs	8,836 lbs	40,000 lbs

FEATURES

- 10" tube mast
- Hydraulic outrigger
- Operator emergency shut down
- Planetary tophead drive
- Feed control system
- Powered by the carrier
- Hydraulic cylinder operated pulldown/pullback drill system
- Single station control console

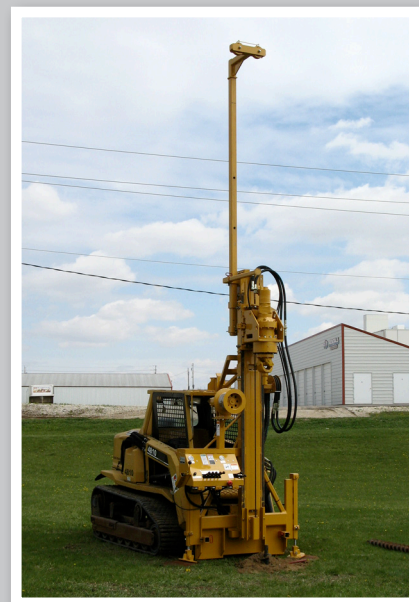


OPTIONS

- Cross head slide
- Angle drilling system
- Various torque
- Cathead/pedestal
- Water/air swivel with hosing



Removal/Attaching of Bandit



Extendable Crown Sheave

Tandem axle truck, trailer, skid, or track mounted • Customizing obtainable